



Care where you need it

Lake Charles Memorial Health System has convenient locations for all of your health needs



Lake Charles



Archer Institute

6713 Nelson Road
Lake Charles
337-480-7792

Lake Charles Memorial Hospital

1701 Oak Park Blvd.
Lake Charles
337-494-3000

Lake Charles Memorial for Women

1900 W. Gauthier Road
Lake Charles
337-480-7000

LCMH Rheumatology

2900 2nd Ave.
Lake Charles
337-480-8994

LCMH Behavioral Health Clinic

2829 4th Ave., Suite 150
Lake Charles
337-480-7800

Memorial LSU Family Medicine

1525 Oak Park Blvd.
Lake Charles
337-494-6767

Advanced Urology

1715 Wolf Circle
Lake Charles
337-480-7499

Internal Medicine of Lake Charles

4345 Nelson Road,
Suite 201
Lake Charles
337-494-6800

Family Medicine- Aster Street

2750 Aster St.
Lake Charles
337-480-8900

Family Medicine- Nelson Road

4345 Nelson Road,
Suite 102
Lake Charles
337-480-7999

OB Care Clinic

1890 W. Gauthier Road
Suite 205
337-562-0510

Obstetrics & Gynecology

1890 W. Gauthier Road
Lake Charles
337-480-5510

Orthopedics & Sports Medicine- Nelson Road

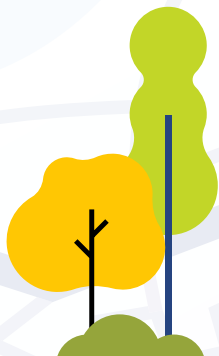
4345 Nelson Road,
Suite 101
Lake Charles
337-480-7942

Orthopedics & Sports Medicine-Sale Road

230 West Sale Road
Lake Charles
337-477-5252

Moss Memorial Health Clinic

1000 Walters St.
Lake Charles
337-480-8100





DeRidder

Oncology & Hematology-DeRidder

109 W. 4th St.
DeRidder
337-221-3004

Heart & Vascular-DeRidder

109 W. 4th St.
DeRidder
337-221-3004



Jennings

Heart & Vascular-Jennings

1902 Johnson St.
Jennings
337-494-3278



Iowa

Iowa Health Clinic

203 E. Miller Ave.
Iowa
337-582-7632



Moss Bluff

Family Medicine-Moss Bluff

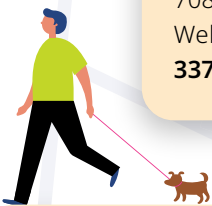
217 Sam Houston Jones Parkway,
Suite 104
Moss Bluff
337-480-8989



Welsh

The Clinic of Welsh

708 E. Russell Ave.
Welsh
337-734-4500



Sulphur

Oncology & Hematology-Sulphur

3924 Maplewood Drive
Sulphur
337-494-6768

Heart & Vascular-Sulphur

913 East Kent Drive
Sulphur
337-527-3610

Advanced Urology-Sulphur

3924 Maplewood Drive
Sulphur
337-480-7499

Clinics on-site at Lake Charles Memorial Hospital

- Gastroenterology
- General and Trauma Surgery
- Heart & Vascular
- Internal Medicine
- Interventional Spine
- Oncology & Hematology
- Orthopedics
- Neurosurgery
- Pulmonology
- Urology

